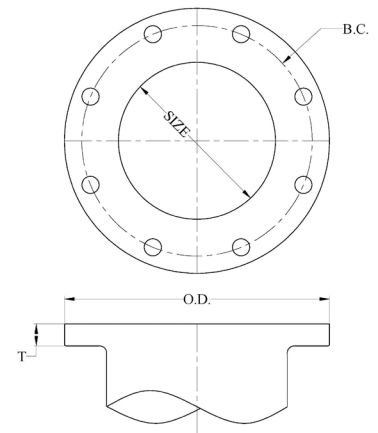


28U — ANSI/AWWA C110/A21.10 C110 FLANGE JOINT CLASS 125 PRODUCT

Revised 2/2025 (Current revisions for the noted Standards apply)

SIZES:	2"–64"
STANDARDS:	ANSI/AWWA C110/A21.10, NFPA 13/24, ASME B16.1, 3"–12" UL listed and FM approved.
MATERIAL:	Cast of ASTM A536 qualified ductile iron. Date code is cast on and required for traceability.
PRESSURE RATING:	*Flanged fittings *2"–48" rated at 250 psi. 54"–64" rated at 150psi. *Note: With rubber annular ring flange gasket, 2"–24" flanged fittings can be rated at 350 psi.
DEFLECTION:	Deflection is not recommended for flange joint due to the rigidity of the joint.
NSF-61 & NSF372:	Meets all requirements, including Annex G, Tyler Union's Underwriters Laboratory listing MH16439.
COATING:	Asphaltic or Primer per ANSI/AWWA C104/A21.4, Standard primer is Tnemec Pota Pox N140-1211. Contact Tyler Union for additional coating options.
CEMENT LINING:	Per ANSI/AWWA C104/A21.4, with double cement lining available upon request.
EPOXY COATING:	Fusion-bonded epoxy per ANSI/AWWA C116/A21.16. Additional coatings available upon request.
BARE FITTINGS:	Available upon request.
FLANGES:	ANSI Class 125 per ASME B16.1 and ANSI/AWWA C111/A21.11. Bolt holes shall straddle the center line. NOTE: Class 125 ASME B16.1 are not compatible with Class 250 Flanges. NOTE: Class 250 ASME B16.1 fittings are available upon request.
FASTENERS:	High-strength low-alloy weathering steel per ANSI/AWWA C111/A21.11 and ASTM A242.
INSTALLATION:	Install per AWWA C600/C651 using pipe conforming to ANSI/AWWA C151/A21.51.



FLANGE DETAILS IN INCHES							
Size (In.)	Diameter DI Pipe	Flange O.D.	B.C. Diameter	Flange Thickness T	Bolt Hole Diameter	Bolt Size	Qty. Bolts
2	2.51	6.00	4.75	0.62	0.750	5/8 x 2-1/4	4
3	3.96	7.50	6.00	0.75	0.750	5/8 x 2-1/4	4
4	4.80	9.00	7.50	0.94	0.750	5/8 x 3	8
6	6.90	11.00	9.50	1.00	0.875	3/4 x 3-1/2	8
8	9.05	13.50	11.75	1.12	0.875	3/4 x 3-1/2	8
10	11.10	16.00	14.25	1.19	1.000	7/8 x 4	12
12	13.20	19.00	17.00	1.25	1.000	7/8 x 4	12
14	15.30	21.00	18.75	1.38	1.125	1 x 4-1/2	12
16	17.40	23.50	21.25	1.44	1.125	1 x 4-1/2	16
18	19.50	25.00	22.75	1.56	1.250	1-1/8 x 5	16
20	21.60	27.50	25.00	1.69	1.250	1-1/8 x 5	20
24	25.80	32.00	29.50	1.88	1.375	1-1/4 x 5-1/2	20
30	32.00	38.75	36.00	2.12	1.375	1-1/4 x 6-1/2	28
36	38.30	46.00	42.75	2.38	1.625	1-1/2 x 7	32
42	44.50	53.00	49.50	2.62	1.625	1-1/2 x 7-1/2	36
48	50.80	59.50	56.00	2.75	1.625	1-1/2 x 8	44
54	57.56	66.25	62.75	3.00	2.000	1-3/4 x 8-1/2	44
60	61.61	73.00	69.25	3.12	2.000	1-3/4 x 9	52
64	65.67	80.00	76.00	3.38	2.000	1-3/4 x 9	52